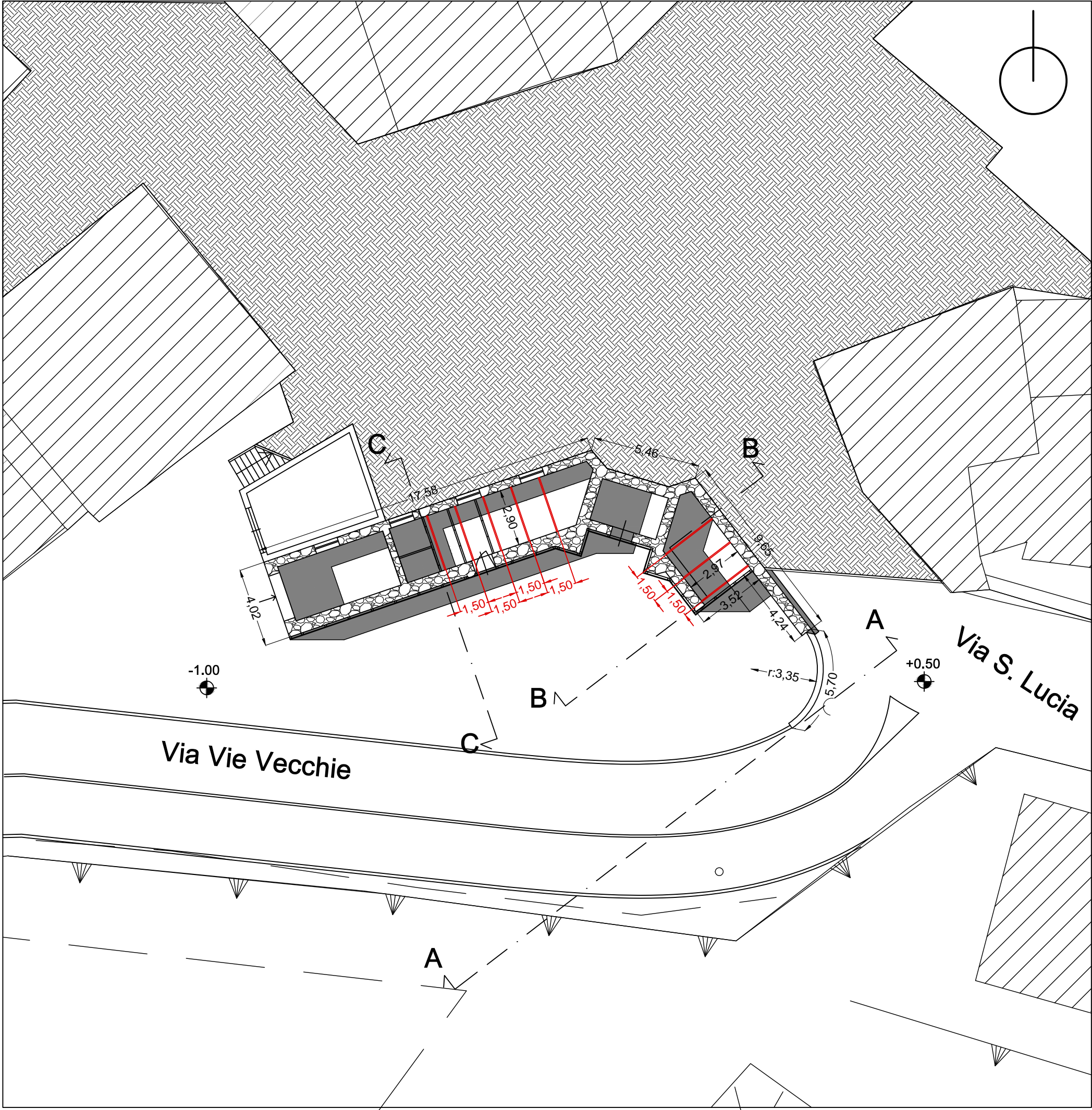
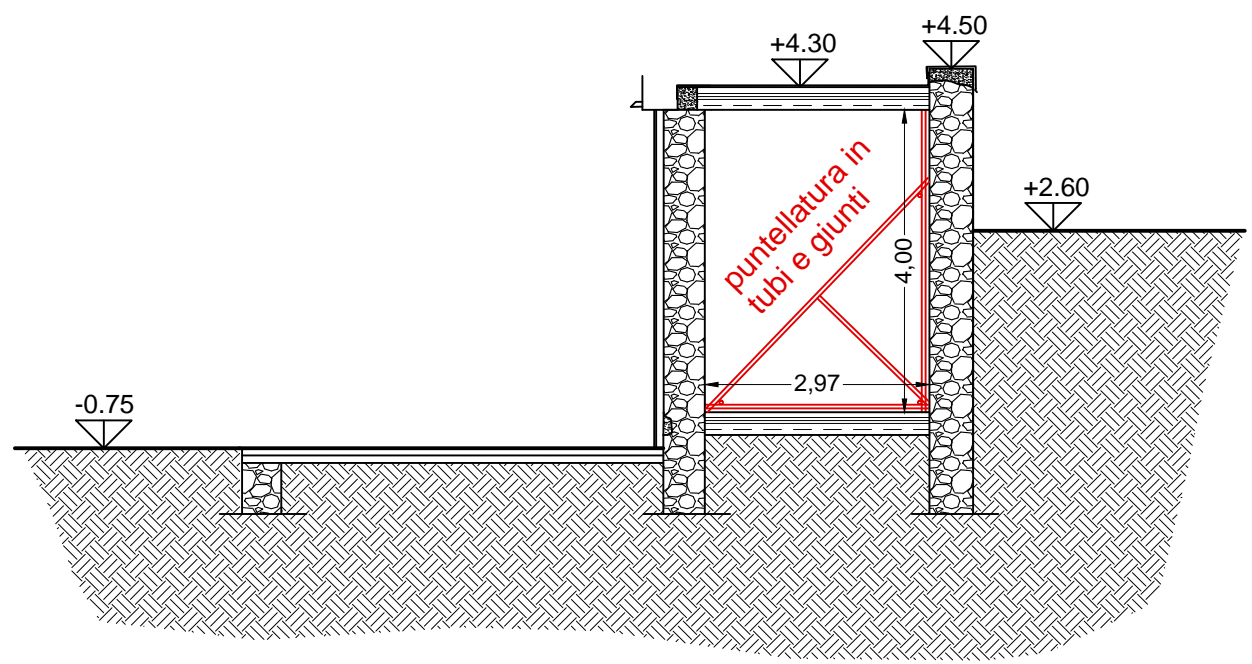
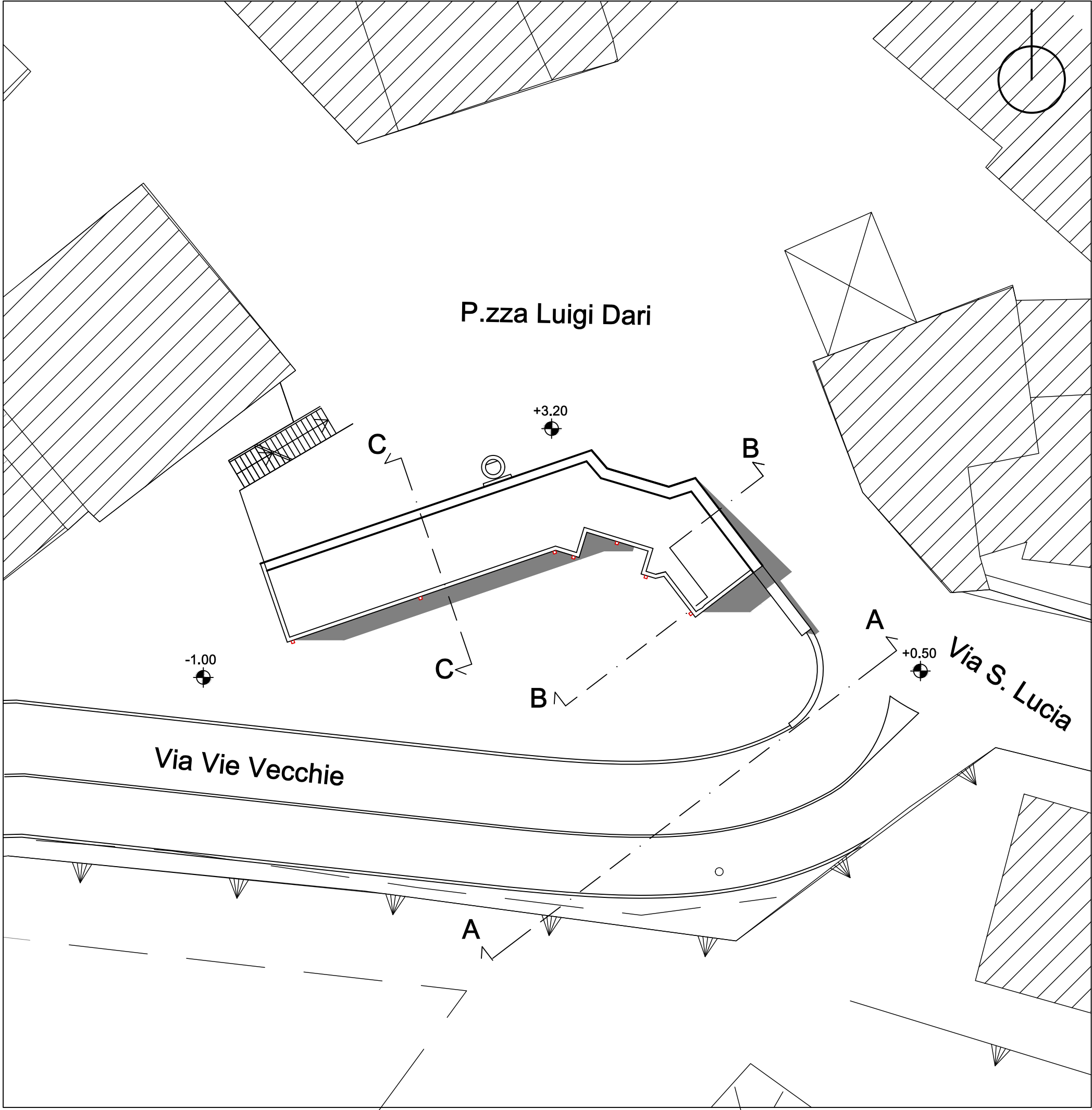


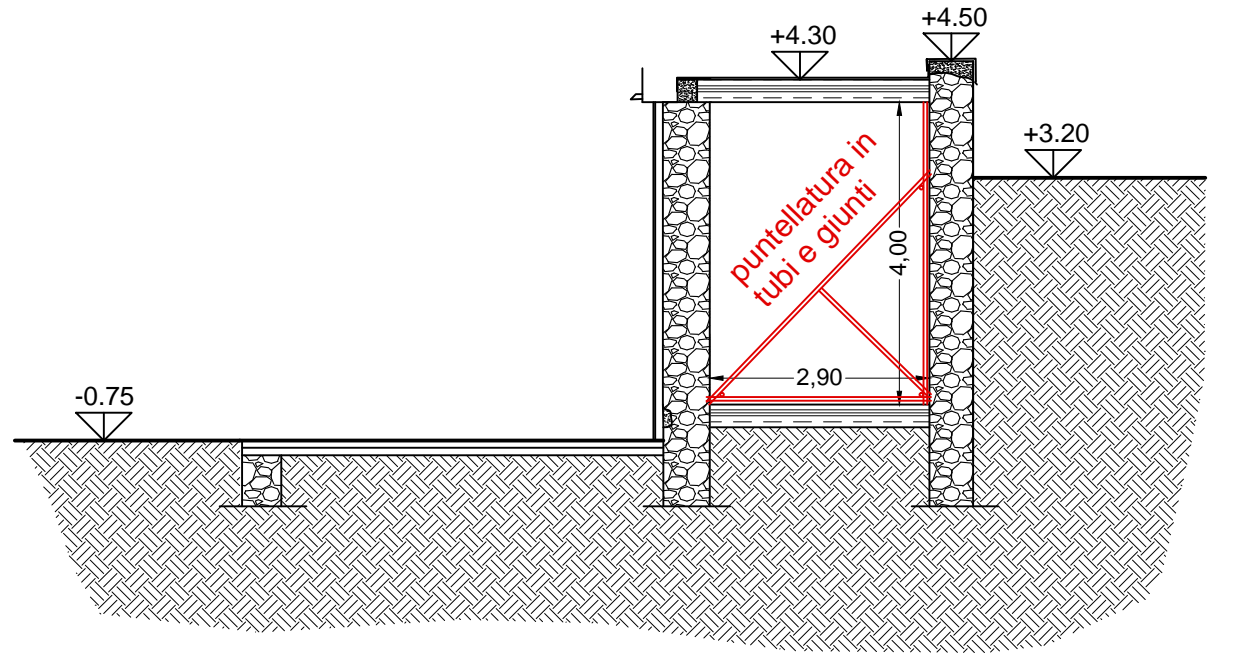
PIANTA PIANO SEMINTERRATO - Scala 1:200



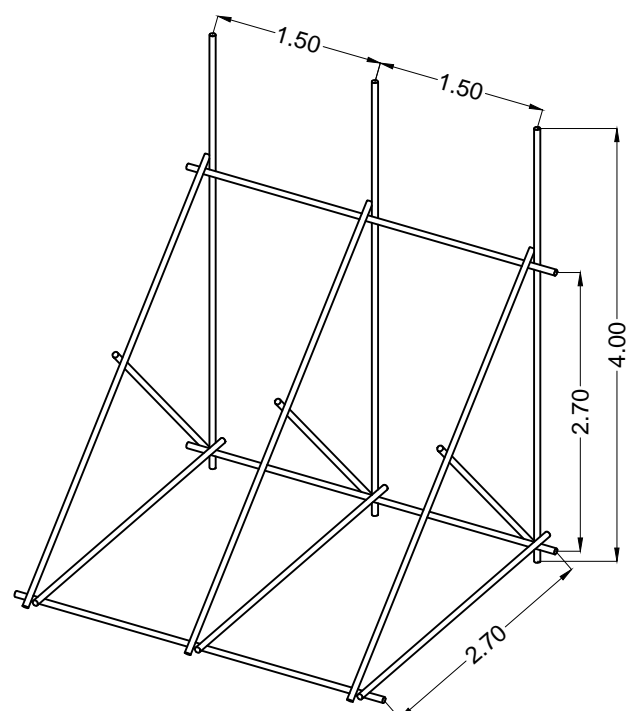
PIANTA PIANO RIALZATO - Scala 1:200



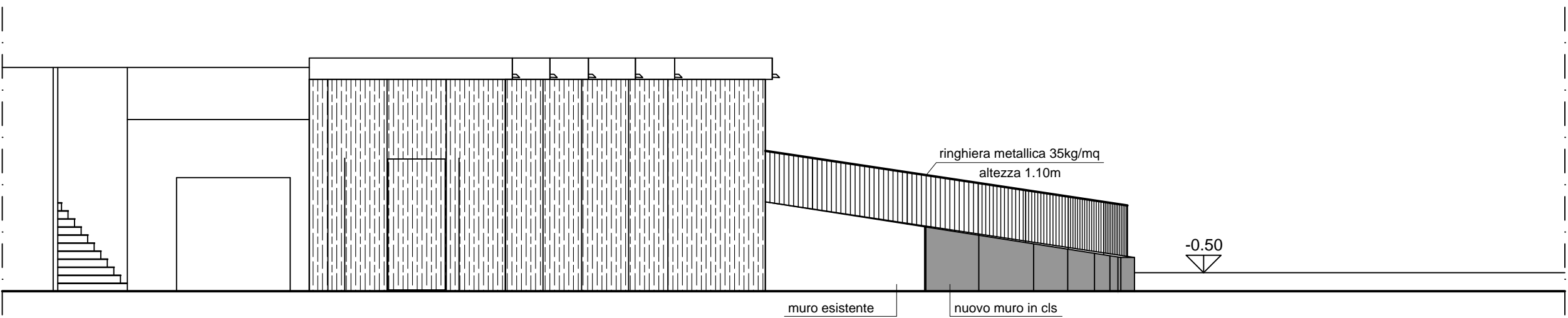
SEZIONE B-B - Scala 1:100



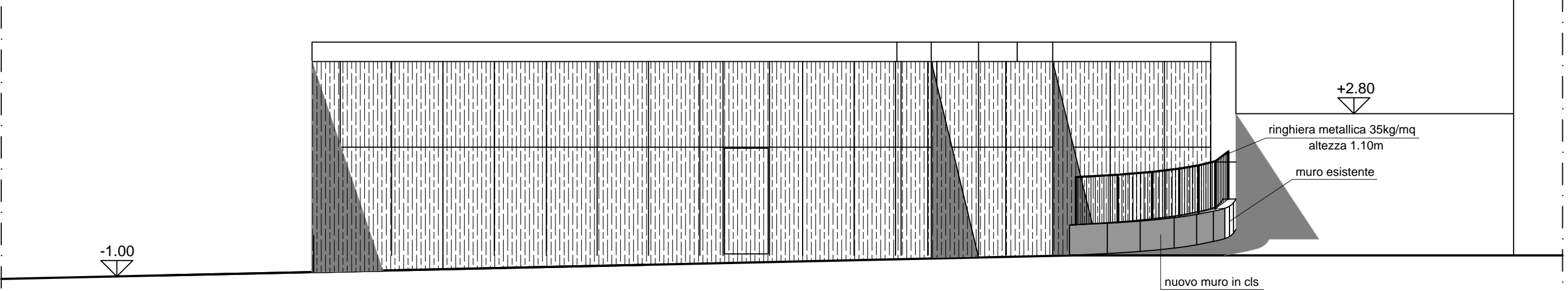
SEZIONE C-C - Scala 1:100



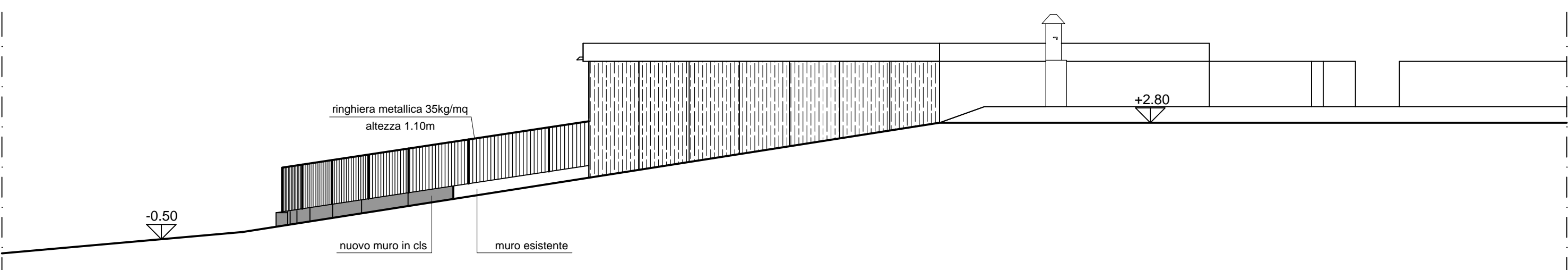
Schema puntellatura



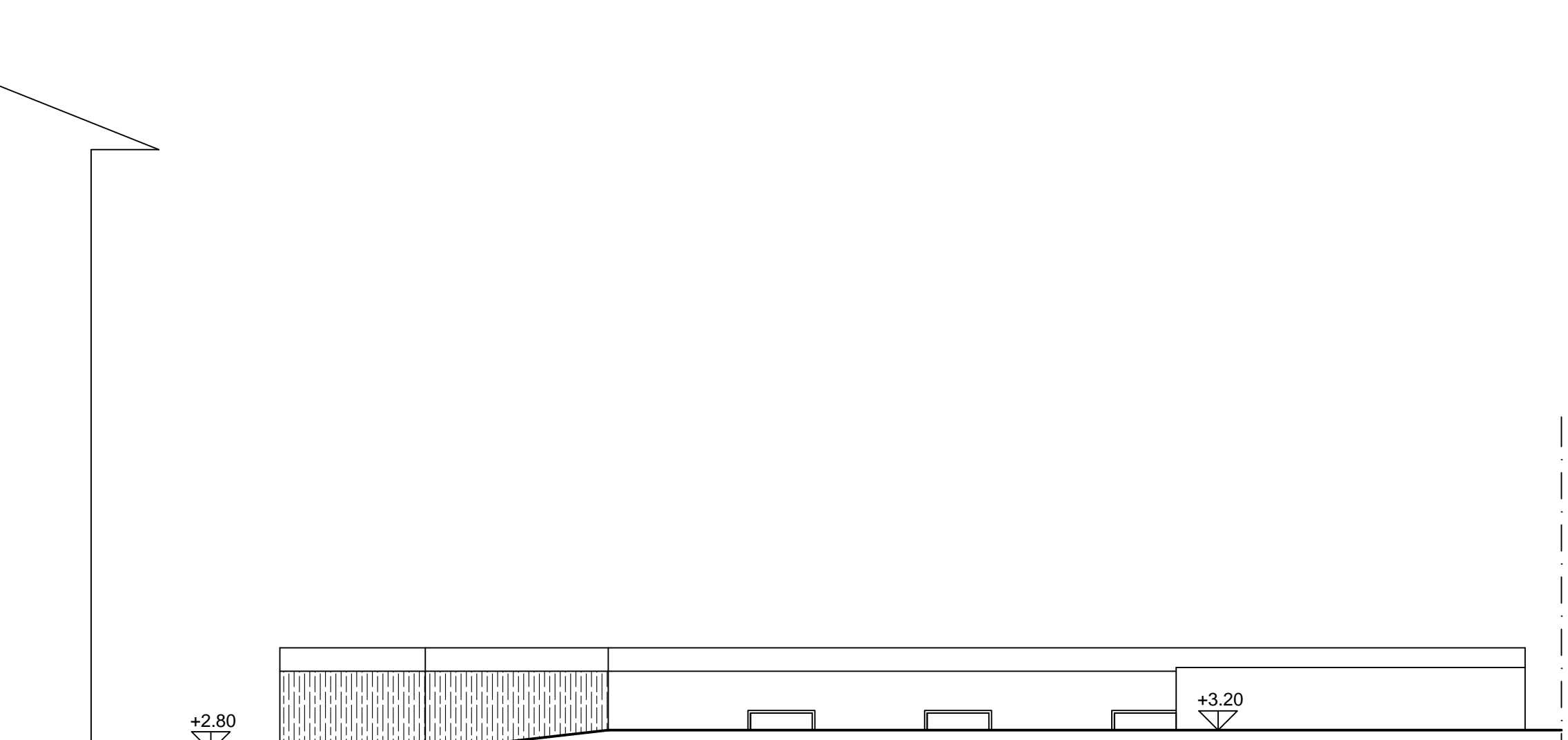
PROSPETTO OVEST - Scala 1:100



PROSPETTO SUD / SEZIONE A-A - Scala 1:100



PROSPETTO EST - Scala 1:100



PROSPETTO NORD - Scala 1:100

<b>Comune di FOLIGNANO</b>		
Provincia di Ascoli Piceno		Regione Marche
<b>DEMOLIZIONE EX SCUOLA ELEMENTARE P.ZZA LUIGI DARI IN FOLIGNANO, AMPLIAMENTO STRADALE E SISTEMAZIONE A PARCHEGGIO</b>		
ELABORATO: TAVOLA 3	SCALA: VARIE	DATA: 21.01.2019
<b>PROGETTO ESECUTIVO</b>		
STATO RIFORMATO: PIANTE, PROSPETTI E SEZIONI		
Progettista  Ing. Francesco Trovarelli	Responsabile del procedimento  Arch. Francesca Romana Mancini	